



annual report

2018-2019

KCLS
acknowledges
that we work on
Aboriginal land
and pays respect
to elders past
and present.

Contact us

KUNUNURRA

4 Papuana Street
PO Box 622
Kununurra WA 6743
Tel: (08) 9169 3100
Fax: (08) 9169 3200
Freecall: 1800 686 020
Email: office@kcls.org.au

BROOME

3/41 Carnarvon Street
PO Box 2715
Broome WA 6725
Tel: (08) 9192 5177
Fax: (08) 9192 5677
Freecall: 1800 797 088
Email: broomeoffice@kcls.org.au

 WWW.KCLS.ORG.AU

 [@KIMBERLEYCLS](https://www.facebook.com/KIMBERLEYCLS)

contents

report from chair	2
about KCLS	3
year in review	8
KCLS board	15
financial report	17



report from chair

With KCLS celebrating 20 years of operation, it is a good time to reflect on what has been achieved over two decades as a community based, community run service and the exciting opportunities for change and development still before us.



Twenty years ago, legal help was out of reach for most people living in the Kimberley. If you couldn't afford a private lawyer, you were largely on your own if you had a non-criminal issue. This was especially difficult for women experiencing family violence.

KCLS was created to fill that void by a small group of Kununurra women and I am proud of the hard and effective work of numerous volunteers, committee and board members and staff members ever since then. KCLS has been able to support our community through delivery of around 15,000 individual legal and support services over these past decades.

During this period, KCLS has steadily developed and deepened our services as well. We have evolved from a legal service to a multi-disciplinary practice, offering financial counselling, tenancy, family violence and elder abuse support service. We have extended our reach across the entire region, growing our Broome office as a hub for the West Kimberley area and are extending ourselves to have more impact on justice for our client communities, through community outreach, law reform and systemic advocacy work.

The 2018-19 year showed KCLS as a dependable and professional source of support for our clients, with plenty of opportunity for further innovation. In the past year KCLS has focused on innovation and expansion in areas of community need, including:

- secured a 3-year agreement to provide a pilot elder abuse specialist service, working in close collaboration with Kimberley Aboriginal health services;
- continued our close collaboration with the ANU College of Law, which now features an ANU-funded advocacy role, based in Broome and a comprehensive clinical legal education component; and
- expanded our Broome office from just 3 positions at the beginning of 2018, to seven staff plus interns by the end of the year.

I'd like to thank all of the staff, Board, members, volunteers and partners of KCLS for their dedication over the past year - and in particular I would like to commend our exiting Chair Ms Temali Howard for her strong and effective leadership over her term of office!

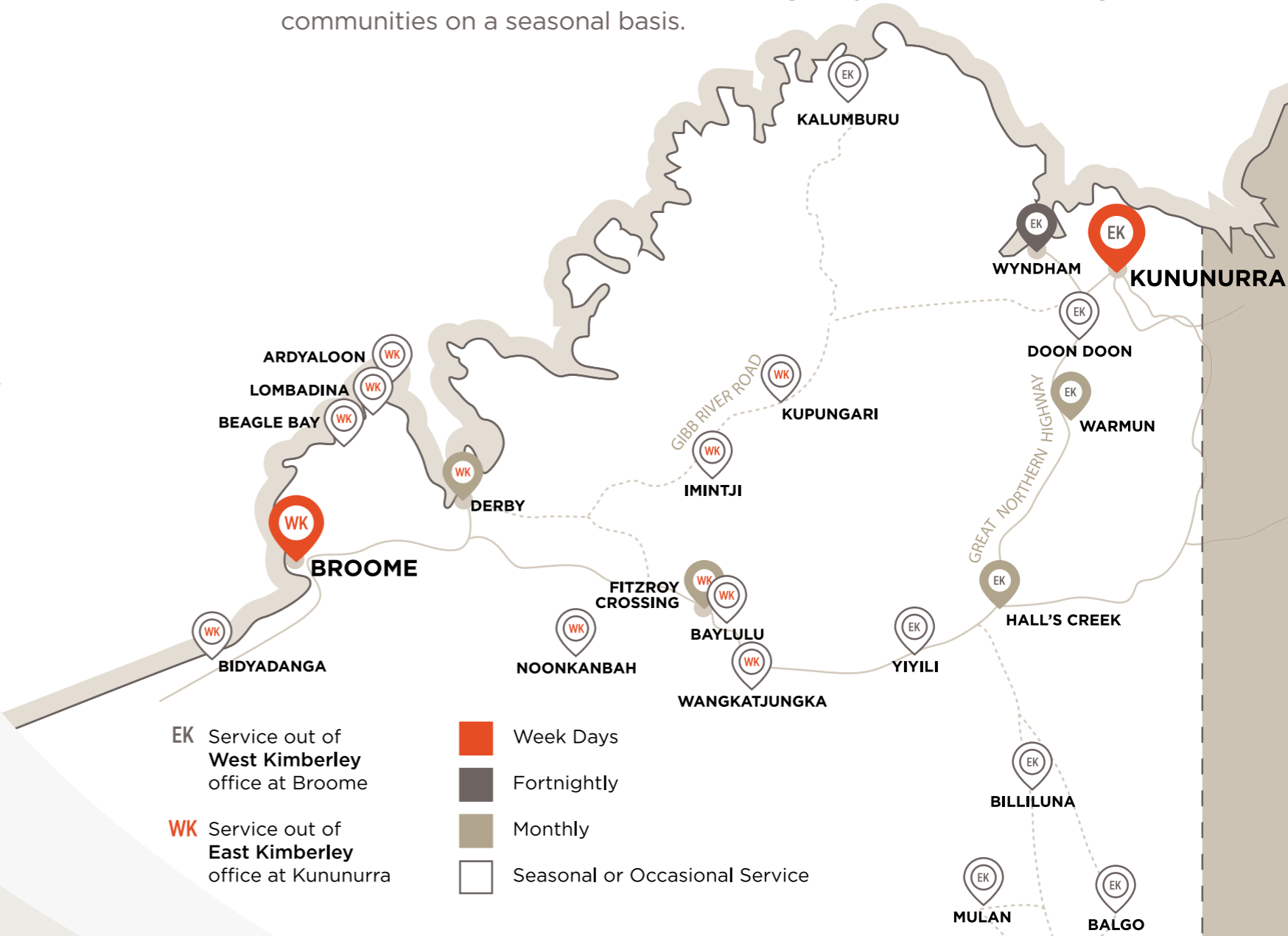
Happy Anniversary KCLS!


KARYN APPERLEY ACTING CHAIR

about KCLS

Our region

KCLS provides legal and family support services throughout the Kimberley region, which has a population of about 50,000 people in an area about twice as large as the state of Victoria. The traditional owners of the Kimberley included as many as 60 different language groups. Our client communities are places of cultural vitality and community integrity, but they also struggle with challenges of poverty, remoteness and the ongoing legacies of colonization. We do our best to take our service to our clients, which means we have one the most challenging outreach schedules in the country. In 2018-19, from our offices in Broome and Kununurra, we visited all six towns regularly, and sixteen Aboriginal communities on a seasonal basis.





KCLS is an independent, not-for-profit community legal centre based in the Kimberley region of Western Australia. We provide legal advice and representation, community education, systemic advocacy, and social support services to people across the Kimberley. We strive to ensure that laws and institutions are fair on paper and in practice, that people have knowledge about the law, and that people can get reliable legal help when and where they need it. We do this in partnership with the people and communities we serve.

KCLS forms part of a national network of community-based legal services and is a member of Community Legal Centres Australia (CLCA) and Community Legal - Western Australia (CLWA).

Our **strategic priorities**

- Deliver outstanding services
- Strengthen community connections
- Build a resilient organisational base

For our full strategic plan for 2018-2021, see our website www.kcls.org.au/who-we-are

Our **mission** is to help all Kimberley people and communities understand, navigate and influence the laws and institutions that affect our lives.

Our **vision** is dignity and justice for all people in the Kimberley.

Our **services**

KCLS operates a multidisciplinary legal and family services practice to clients in need across the Kimberley region of Western Australia. Based out of our offices in Broome and Kununurra, we offer regular outreach to all six towns in the region, and 16 Aboriginal communities.

Our service includes general civil and family law advice and representation, as well as financial counselling and specialist intensive support for clients experiencing family violence, elder abuse, or tenancy difficulties. We also provide education and engagement throughout the region on legal topics.

We pride ourselves on the quality and professionalism of our work, but also on going to where our clients need us, and working in a culturally appropriate way for the Kimberley. We're a grassroots centre, with enduring links in the communities where we operate.

We would like to thank and acknowledge all those have supported our service in the past year, including:

COMMONWEALTH OF AUSTRALIA

- Attorney-General's Department - funds our general legal work, as well as our specialist Family Violence support service in Kununurra, and our Elder Abuse support and prevention pilot projects in Broome and Kununurra.
- National Indigenous Australians Agency - funds our outreach and education work through our Indigenous Women's Program.

STATE OF WESTERN AUSTRALIA

- Department of Communities - funds our Public Tenancy Support Service and our Financial Counselling Service.
- Department of Mines, Industry Regulation and Safety - funds our Tenancy Advice and Education Service.
- Australian National University, College of Law - funds our work on systemic advocacy, and supports KCLS through a volunteer hotdesk in Canberra, academic collaboration, and internships as part of a formal clinical legal education partnership.
- Clayton Utz - provides pro bono advice to KCLS, and accepts client referrals on a pro bono basis.
- The Aurora Project - coordination of legal and other internships at KCLS
- Deakin University - provision of legal and business interns for KCLS
- And last but not least: our 100 individual donors, each of whom contributes a monthly donation to support our work with clients with complex and urgent needs. Many thanks, your support is invaluable!



We would also like to acknowledge the hard work and dedication of our staff who have moved on this past year, including:

Ruth Abdullah OAM
Richard Brandon-Baker
Liz Brown
Grace John

Alex Johns-Kula
Vanessa Lynch
Rafael Szumer
Carol Wei

Finally, a big thanks to all the interns and volunteers who have helped KCLS throughout the year:

KCLS SECONDEES, INTERNS & GDLPS				
Chrisoula Alisandratos	Lauren Franks	Charlotte Maybery-Reupert	Harriet Roberts	Jordan Smyth
Abby Bartlett	Jared Hee	Damian Mazur	Max Roelofsen	Peter Subramanian
Maree Casey	Todd Herskope	Dylan McGirr	Callum Rose	Tom Synnott
Kira Clark	Crystal Holt	Nicola Mildren	Daniel Shlager	Kezia Thomas
Sebastian Cross	Zoe Huijer	Nila Norbu	Tanya Sinha	Angus Vos
Loren Ferrel	Emily I'Ons	Alexa Pelkowitz	Brandon Smith	Gabriella Yeo

ANU HOTDESK VOLUNTEERS				
Lauren Abrahams	Georgia Fenell	Alice Landels	Ingrid Olbrei	Anahita Surya
Amne Alrifai	Abby Gallagher	Manon Leriche	Jessica Payne	Charlie Taylor
Edwin Sin Chi Au	Eloise Gordon	Celia Li	Kate Pereira	Greer Taylor
Amelia Barclay	Karl Gosier	Jessica Liao	Catherine Pilley	Lucinda Taylor
Matthew Barton	Kate Gray	Dylan McGirr	Sabina Prus-Wisniowski	Amy Thomas
Julia Brieger	Sam Hagan	Madeleine McGregor	Naini Rautela	Stephanie Towns
Stephanie Cairney	Xavier Hanckel-Spice	Imogen McKay	Josephine Renfrey	Amelia van Ewijk
Adam Cass	Alessandra Hayward	Alexandra Manson	Julia Rheinberger	Mary Valtas
Jemma Cavanagh	Jared Hee	Damian Mazur	Yasmine Sahihi	Isabel Vaughan
Nathan Cleary	Lachlan Hill	Charlotte Maybery-Reupert	Natalie Seeto	Hannah Weston
Lily Cox	David Ierace	Tess McLinden	Emily Shaw	Annabel White
Olivia Creagh	Emily I'Ons	Maaik Meijnders	Jessica Sidi	Abigail Widiyanto
Erin Daniel	Zehra Kazmi	Young Min	Ella Sheppard	Harriet Wilson
Alisha DasGupta	Stephanie Kerr	Promathipdey Monorom	Ewan Small	Jacob Wong
Annie De Groote	Lucy Kibble	Edwina Morton	Alexandria Smith	Yiwen Yan
Isabella Dimattina-Beven	Katharine Haywood	Elizabeth Newman	Danica Smith	Aimee Zhao
Tom Dodds	Keat (Kenneth) Hou Kua	Nila Norbu	Mollie Smith	Melly Zhao
Julia Douglas-Oliveira	Genevieve Lai	Sarah Norgrove	Anna Stewart-Yates	
Lydia Edwards	Sienna Lake	Shelby O'Connor	Peter Subramaniam	

our year in review

During 2018-19, KCLS helped a total of **1218 clients** with a range of legal issues. We delivered **1510 individual services** to those clients, ranging from simple legal advice to complex programs of family support and difficult litigation matters. This is a higher volume of work than at any point in KCLS' history. We are proud at having pushed ourselves to be there for our client communities, even during periods where we were short-staffed.

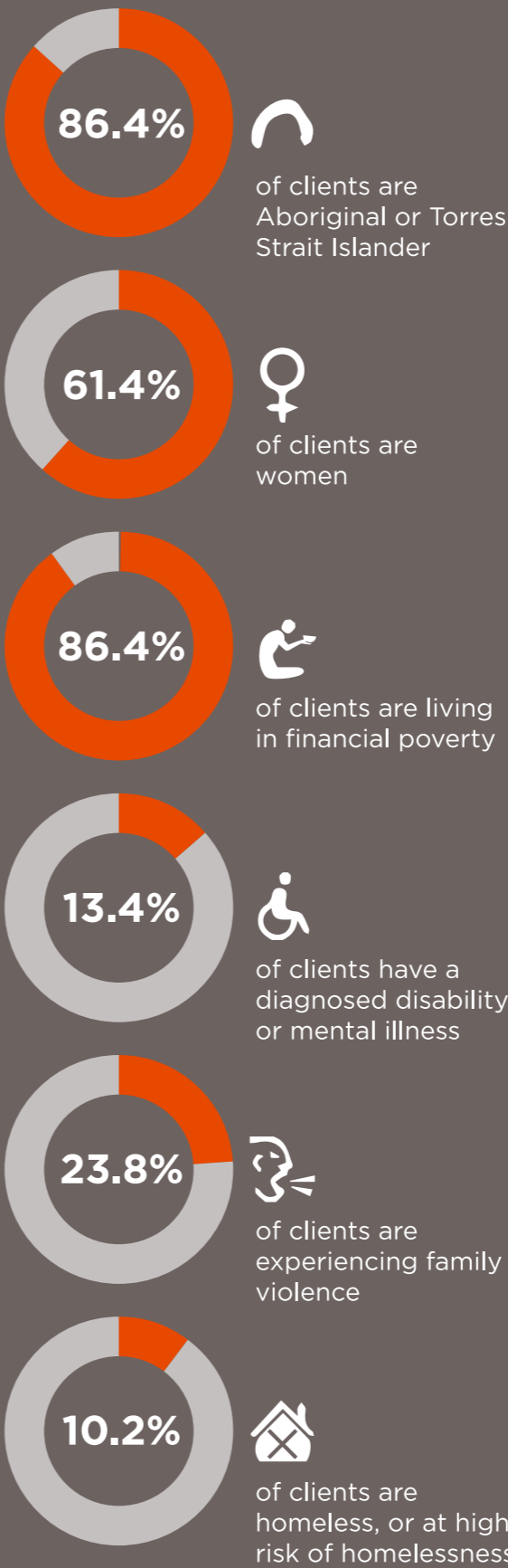
In everything from health care to housing maintenance, there is an overall trend towards centralising services in remote areas like the Kimberley, and even moving some kinds of service partly or wholly online. At KCLS, we have deliberately resisted that trend, because we believe people in remote communities should have face-to-face access to basic service including legal support. And so during this year we actually increased our presence in remote communities, such as by running outreach trips to the Dampier Peninsula communities, and increasing the frequency of our visits to Kalumburu and the desert communities south of Halls Creek.

In addition, the year past has been marked by the following significant developments:

- KCLS was successful in tendering to provide a pilot support service for older Australians suffering physical, financial and other forms of abuse. This funding, awarded by the Commonwealth Attorney-General's Department, is enabling KCLS to substantially increase our capacity for older people who are often struggling alone with these issues. We will develop the first-ever set of resources specifically designed to help people deal with

"humberging" (financial abuse) in Aboriginal communities. And we are delighted to be working in partnership with the Broome Regional Aboriginal Medical Service and the Ord Valley Aboriginal Health Service to develop this program.

- This year was KCLS' 20th birthday, and we celebrated in style with current and former staff, Board members and others. We were pleased that WA's Attorney-General, Hon. John Quigley, came up to help us commemorate and celebrate this occasion!
- After many years of hard work and effort by a broad coalition of voices, Western Australia has introduced legislation that will make imprisonment for fine default an absolute last resort. This will end the widespread practice of people "working off" their fines by going to prison, and shift the balance towards people working and caring for others in their community instead. KCLS played a modest role in the campaign to change these laws in recent years.
- Our close partnership with the ANU College of Law has continued to develop, and is providing benefits both to the law students engaged in this work, as well as to KCLS' our client communities. In fact, the opportunities are so exciting that both organisations have decided to develop a formal clinical legal education program to bolster our work together. And we are grateful that ANU is now financially contributing to legal capacity here in the Kimberley to help drive real systemic changes for our clients.
- Financially, KCLS is on a sound footing, with new program funding placing us in a strong position for 2019-20. KCLS has invested significantly in fundraising from private donors this year. We anticipate that this investment in growing our monthly giving will increase revenue for many years to come. Our financials show a net deficit of \$76,195 for the year, which reflects an upfront cost of about \$88K in fundraising. Aside from the fundraising investment, KCLS would have generated an underlying surplus of around \$12K for the financial year.



Our services included:

289	referrals and information services
408	legal advices and legal tasks
217	completed legal representation matters
75	intensive non-legal support services

Issues we helped clients with included:

Housing	15.7%
Injury compensation	13.1%
Credit & debt, consumer law, and financial counselling	12.6%
Wills and estates	8.4%
Domestic violence	8.3%
Licences and fines	7.7%
Employment law	5.5%
Parenting and child support	5.3%
Child protection	2.5%
All other issues	20.9%

principal solicitors' report

Kununurra (East Kimberley)

This past year has seen significant change within KCLS in the East Kimberley with new staff and new programs being run out of the office.

STAFF CHANGES

Liz Brown joined the team as a junior lawyer in 2016 left us at the end of 2018 to pursue her legal career with the family violence prevention legal service in Melbourne. We miss Liz's attention to detail, motivation and experience.

Rafael Szumer started at KCLS in 2016 and left us at the end of 2018 to change his career path by studying medicine in Sydney. Rafael's experience in family law greatly increased our teams capacity to assist clients dealing with relationship break down.

At the beginning of the year we were joined by Norah Fahy who moved to the East Kimberley from Adelaide. As a solicitor Norah has brought with her strong research, report writing and advocacy skills and she is an asset to our team.

Grace Dudley, also joined us as a solicitor at the beginning of the year when she relocated from Canberra. Grace first experienced KCLS as an Aurora Intern and she is developing strong client and advocacy skills as she develops her professional skills.

During staff changes there is always increased pressure on the staff that remain in the office and during these periods Lauren Reed has worked tirelessly and been an invaluable support to clients, staff and myself. Lauren has been an excellent advocate to clients and a tireless support to interns, she is an asset to our office.

CASEWORK HIGHLIGHTS

We continued to consistently provide our outreach services to Halls Creek, Kalumburu, Warmun, Wyndham and Balgo where we can support people living in remote communities with access to civil and family law assistance.

Our credit and debt service has continued to achieve great outcomes for clients through advocacy and negotiation with creditors. We have also begun to build our expertise in Centrelink debt appeals with one significant win at the Administrative Appeals Tribunal.

Our tenancy work has built as we have developed our case management practices when working with the Public Tenancy Support Service Program.

We have further developed our response to the needs of women living with family violence by developing our skills in case management in working with the Family Support and Assistance Team.

Our advice service in Kununurra has continued to grow as we have clarified the legal work that we will and will not assist with and strengthened our partnerships with the other legal services in Kununurra.

Lastly, it must be said that we would not be able to achieve the work that we do without the help of the interns that visit our office from the ANU. They bring energy, enthusiasm and a dedication to getting the job done and we are grateful for their work and contribution.

HANNAH LEVY, PRINCIPAL SOLICITOR (EAST KIMBERLEY)



Broome (West Kimberley)

2019 has been a year of change and growth in the Broome office. We have farewelled Carol Wei and Richard Brandon-Baker (Solicitors) along with Grace John (Client Service Officer), all of whom were valued members of our team and we wish them well with their new endeavours.

We have welcomed a number of new staff to both existing and new positions, and now have a team of 7. This is a big step up from even a year ago, when there were just three of us!

SERVICE SUMMARY

We have continued to provide a broad range of services to the people of the West Kimberley in our traditional practice areas including tenancy, licensing matters, restraining orders, deceased estates credit and debt matters and criminal injuries compensation applications. We have also seen an increase in family law and child protection matters coming through our door which has allowed us to fill some of the gaps in services to people needing assistance in these areas – leading to better outcomes for these clients.

We are continuing to develop strong links with other service providers which provides a greater support structure for both staff and clients.

OUTREACH SERVICES

Our Derby Outreach continues to grow and we have established a solid reputation for providing services to Derby and surrounding areas.

We are fortunate to have Tallulah assisting us to re-establish our presence in the Fitzroy Valley region so that we can provide more consistent and effective service delivery to Fitzroy Crossing and surrounding communities.

We are also continuing to provide ad hoc outreach services to the Dampier Peninsular & Bidiyadanga. With our added resources we anticipate being able to regularise our outreach services to these communities in 2020.

RADIO SHOW – DEADLY JUSTICE

In September we saw the launch of “Deadly Justice”, a fortnightly radio show broadcast on Radio Goolarri, 99.7FM. This is the brainchild of and hosted by Sarouche and Tallulah. We see this as great way to continue to raise our profile in the West Kimberley and provides an alternative way to provide legal education and commentary to local people.

ELDER RESPECT PROGRAM

We are also really excited about the new Elder Respect Program which will launch in the next couple of weeks. This will allow us to provide much needed multi-disciplinary services to our older people.

INTERNS

This year we have been fortunate enough to have 11 Interns complete either the GDLP or PLT with us. This includes Max Roelefson who is now employed as a solicitor. We look forward to continuing our relationship with the ANU and welcoming new interns in November and moving into 2020.

2020

2019 was a year of change and growth, we are looking forward to continuing to grow our profile and service delivery in 2020 and have established a great foundation to achieve this.

I would like to take this opportunity to thank everyone for their hard work and dedication.

KAREN GROVE, PRINCIPAL SOLICITOR (WEST KIMBERLEY)



KCLS and the Australian National University reaching for new heights

On 9 August 2017, the International Day of the World's Indigenous Peoples, KCLS and the Australian National University launched a collaboration to focus on Aboriginal justice issues.



The collaboration had a number of elements, including a permanent paralegal hotdesk in Canberra working on Western Australian time, research internships to bolster our advocacy work, and a network of lawyers and academics to support our work. Over the last year that initiative has flourished and taken new direction.

At the end of 2018, discussions started about having ANU support a position based in KCLS to focus on systemic advocacy. Although I had moved to Melbourne, I had remained involved in the collaboration, and I was asked whether I could be drafted in to incubate a 6 month pilot. I said yes, and accepted a secondment to take up this position.

After a few years away, I returned to Broome excited about the growth of KCLS into a multi-disciplinary practice and about the opportunities to build on the work of the collaboration to date. Over at ANU, Judy Harrison took a sabbatical, and my colleague, Stephanie Booker, stepped in to facilitate the ANU side of the relationship.

Over the last few months in addition to running the hotdesk and facilitating intern research, we've:

- launched a monthly KCLS newsletter;
- commenced a radio show on Goolarri Radio (follow the links to the show, Deadly Justice, on facebook); and
- continued workshopping our platform on housing for a campaign we wish to launch in 2020.

We thank Judy Harrison for her time, commitment, and passion in cultivating the collaboration. The collaboration will continue to flourish. We are garnering philanthropic interest in the collaboration as well as corporate interest to support placements for Aboriginal students.

From the time I've been involved at KCLS, I've always seen that goodwill holds the most potential for our work to benefit our clients and pursue justice for First Nations communities. I continue to feel excited about the potential of the collaboration, and privileged to be part of the work and spend time on country in the Kimberley, this time on Yawuru country.

Gala mabu, thank you.

SAROUCHE RAZI

Focus Stories

Amanda's story

Amanda* is a young Aboriginal mum, living in Kununurra and struggling to get by on an income below the poverty line. She has some help from family, but money is always short. During one conversation with her, she mentioned she was feeling stressed by her finances. She was getting letters about a number of debts, but she wasn't sure what to do about them. One of these with from Horizon Power, and she was particularly worried her power would be disconnected.

Because KCLS runs an integrated service, we were able to seamlessly connect her with our financial counselling service immediately.

AMANDA'S DEBTS INCLUDED:

1. \$4182.30 owing to a debt collection agency. This debt arose from a rent-to-buy scheme she had signed up to several years earlier to purchase a washing machine, television and fridge. The television was smashed and fridge stolen during a break-in shortly after. Because she can't afford insurance, she was unable to replace these items, and will still liable for the debt. Amanda was unable to keep up with the monthly payments but was concerned falling behind would result in her washing machine being repossessed.

KCLS requested the credit agency waive the debt. Although the agency was unwilling to waive the debt, they agreed to not pursue collection. This significantly reduced Amanda's financial pressure, and she has been able to keep her washing machine.

2. \$1341.31 owing to a telecommunications provider. Amanda had been signed up for a combined phone, internet and television package, even though her television had been smashed and she did not own a phone or

computer. The telecommunications company put her on this plan without making sure it was right for her and that she understood it. KCLS successfully requested the provider waive the outstanding debt.

3. Approximately \$2000 owing to her power company. KCLS helped Amanda work out a budget to see what she could realistically pay towards this debt. She agreed to pay \$100 a fortnight towards her power debt, and KCLS assisted her in setting up an automatic payment for this amount direct from her Centrelink payment. Amanda has now paid off her power debt in full, and is in credit on her power account.

4. \$1,827 in rental arrears. KCLS applied for and secured a one-off grant from the Theodore and Isabella Wearne Charitable Trust to cover the rental arrears in full.

In total, KCLS helped Amanda waive, defer indefinitely, or arrange for payment of over \$9,000 in debt. Throughout our assistance period, KCLS also provided Amanda with tips and basic financial literacy education, including:

- How to reduce power costs, in particular how to manage air conditioning sensibly;
- Budgeting basics, and how to work out what she afford in terms on ongoing payments;
- How rent-to-buy schemes work, and how they can be a trap for her

Amanda is doing better, and has a greater sense of confidence about money matters, and where to go if she needs more help. Problems like Amanda's would also be far less frequent and severe if people in her situation had a higher basic income, so they could live in dignity above the poverty line.

** name changed*

Joan's story

Joan* is a 21-year-old Aboriginal woman living in Kununurra with her young child. She came to KCLS in mid-2018, and explained that her ex-partner George* has recently come from another town back to Kununurra. George has a history of being abusive towards her, and things escalated rapidly after his arrival. George would accuse her of sleeping with other men, and was often intoxicated.

Joan told us about one instance where she decided to take her child and mother and move back in with her father, since she feared staying in the same house with George. However, George was waiting for her in front of her father's house, and the two began arguing. Joan and George got into a fist fight, and at one point George dragged her by her hair and twisted her arm behind her back.

As a result of this altercation, George had a 72-hour restraining order against him by the police.

A KCLS lawyer and client advocate listened to Joan's story carefully, and agreed we could help her. Initially, the lawyer helped Joan secure a longer-term violence restraining order against George. Our client advocate focused on helping Joan develop a safety plan, which included how to react if George breached the order, what friends and family she could call on, how to leave a house quickly and how to get police and other help quickly.

During the subsequent weeks, Joan's mental health deteriorated due to the earlier incidents of violence, as well as her lack of money and feeling of hopeless about her own future. This included thoughts of suicide.

* name changed

Over the next six months, KCLS continued to see Joan on at least a fortnightly basis, and wrote numerous letters and attended meetings on her behalf to access additional supports – including financial support for a phone, emergency food vouchers, treatment for alcoholism, and requests for a housing transfer. Throughout this period, Joan continued to feel at risk from George's family in town, who often abused her verbally.

Christmas was a very difficult period for Joan, but she did not give up. Joan is hoping to be able to leave town for Darwin for a period of time, to get away from George's family and to make a break from a social circle in Kununurra that encourage her to drink excessively. KCLS has helped her make an application for priority housing in Darwin.

Joan still has a great number of problems, but we are encouraged that she can at least see a future for herself and her child and start to plan ahead. With KCLS help, she got a transfer to a better house. Her confidence is gradually growing, and she has succeeded in being free from physical violence for nearly eighteen months now. We'll stick with her as long as she needs us.

our board

KCLS has a membership base of 87 individuals who are involved in various ways with justice for Kimberley communities. Our membership base is 57.5% Aboriginal. Each year, our membership elects our Board, which serves on an entirely voluntary basis. We are grateful for the hard work and strong contribution of our Board over the past year!

Current Board members (as of 1 Dec 2019)



Karyn Apperley
Acting Chair



Kylie Kerin
Secretary



Allan Wedderburn
Treasurer



Caroline Constant
Board Member



Amanda Whitehead
Board Member



Victoria Baird
Board Member

Former Board members



Lindsay Greatorex
Board Member



Temali Howard
former Chair



Olwyn Webley
Board Member

CURRENT BOARD MEMBERS		Meetings attended/eligible to attend
Karyn Apperley (Acting Chair)		3 of 6
Kylie Kerin (Secretary)		6 of 6
Allan Wedderburn (Treasurer)		6 of 6
Caroline Constant (Board Member)*		3 of 3
Amanda Whitehead (Board Member)		3 of 6
Victoria Baird (Board Member)		5 of 6

FORMER BOARD MEMBERS		
Lindsay Greatorex (Board Member)^		4 of 5
Temali Howard (Chair)#		3 of 5
Olwyn Webley (Board Member)-		4 of 6

* elected 3 Dec 2018
^ resigned 11 Jun 2019
resigned 9 Jun 2019
- resigned 6 Nov 2019

financial report

For the Year Ended 30 June 2019

contents

committees's report	18
statement of profit or loss and other comprehensive income	19
statement of financial position	20
statement of cash flows	21
notes to the financial statements	22 - 25
statement by members of the committee	26
independent auditor's report	27 - 28

COMMITTEE'S REPORT

Your committee members submit the financial report of the Kimberley Community Legal Services Inc for the financial year ended 30 June 2019.

The names of committee members throughout the year and at the date of this report are:

Allan Wedderburn (Treasurer)	Karyn Apperley (Secretary; Deputy Chair from 3/12/18)
Amanda Whitehead	Olwyn Webley (resigned 6/11/19)
Lindsay Greateorex (resigned 11/6/19)	Kylie Karin (Chair; Secretary from 3/12/18)
Temali Howard (Chair from 3/12/18; resigned 10/6/19)	Victoria Baird
Caroline Constant (from 3/12/18)	

Principal Activities

The principal activities of the corporation during the financial year were to provide legal services, counselling service, tenancy advocates services, financial counselling services and community legal education outreach program.


Significant Changes

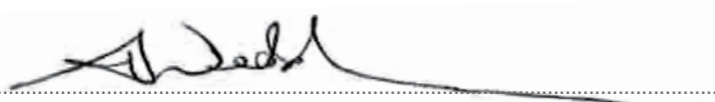
No significant change in the nature of these activities occurred during the year.

Operating Result

The deficit from ordinary activities amounted to \$76,196. The surplus for the previous financial year amounted to \$11,931.

Signed in accordance with a resolution of the members of the committee.


Karyn Apperley, Acting Chair


Allan Wedderburn, Treasurer

Dated this 22 day of November 2019

STATEMENT OF PROFIT OR LOSS AND OTHER COMPREHENSIVE INCOME FOR THE YEAR ENDED 30 JUNE 2019

	Note	2019 \$	2018 \$
Revenue from Grant Funding & Operations		1,683,431	1,614,566
Unexpended Grants brought forward		103,972	311,130
Other Revenue from ordinary activities		4,241	2,178
Employee / Payroll expenses		(1,168,430)	(1,388,670)
Depreciation and Amortisation expenses		(22,586)	(37,868)
Unexpended Grants carried forward	8	(188,503)	(103,972)
Other expenses from ordinary activities		(488,320)	(385,433)
Surplus / (Deficit) from Ordinary activities for the year		(76,195)	11,931
Income tax expense	1a	-	-
Surplus / (Deficit) after income tax from ordinary activities		(76,195)	11,931
Other Comprehensive Income			
Items that will not be reclassified to profit or loss:		-	-
Items that will be reclassified subsequently to profit or loss when specific conditions are met:		-	-
Total Comprehensive Income for the year		(76,195)	11,931

The accompanying notes form part of these financial statements.

STATEMENT OF FINANCIAL POSITION AS AT 30 JUNE 2019

	Note	2019 \$	2018 \$
ASSETS			
CURRENT ASSETS			
Cash	2	505,858	321,905
Receivables	3	2,292	68,753
Prepayments		1,449	42,943
Credit Card Guarantee		-	16,800
TOTAL CURRENT ASSETS		509,599	450,401
NON-CURRENT ASSETS			
Property, Plant & Equipment	4	36,152	47,065
Investments	5	6,798	6,618
TOTAL NON-CURRENT ASSETS		42,950	53,683
TOTAL ASSETS		552,549	504,084
LIABILITIES			
CURRENT LIABILITIES			
Payables	6	76,999	44,534
Provisions	7	101,485	93,821
Unexpended Grants	8	188,503	103,972
TOTAL CURRENT LIABILITIES		366,987	242,327
NON-CURRENT LIABILITIES			
TOTAL NON-CURRENT LIABILITIES		-	-
TOTAL LIABILITIES		366,987	242,327
NET ASSETS		185,562	261,757
EQUITY			
Retained surplus / (deficit)	9	185,562	261,757
TOTAL EQUITY		185,562	261,757

The accompanying notes form part of these financial statements.

STATEMENT OF CASH FLOWS FOR THE YEAR ENDED 30 JUNE 2019

	Note	2019 \$	2018 \$
CASH FLOWS FROM OPERATING ACTIVITIES			
Receipts from funding and operations		1,766,692	1,718,907
Interest received		4,241	2,178
Payments to suppliers and employees		(1,575,127)	(1,899,059)
Net cash provided by operating activities		195,806	(177,974)
CASH FLOWS FROM INVESTING ACTIVITIES			
Purchases of property, plant & equipment		(11,673)	(5,018)
Purchases of Investments		(180)	(6,618)
Net cash used by investing activities		(11,853)	(11,636)
Net Increase / (decrease) in Cash Held			
		183,953	(189,610)
Cash at the Beginning of the Financial Year		321,905	511,515
Cash at the End of the Financial Year	2	505,858	321,905

The accompanying notes form part of these financial statements.

NOTES TO THE FINANCIAL STATEMENTS FOR THE YEAR ENDED 30 JUNE 2019

NOTE 1: SUMMARY OF SIGNIFICANT ACCOUNTING POLICIES

This financial report is a special purpose financial report prepared in order to satisfy the financial reporting requirements of the Association's constitution and its members. The committee has determined the association is not a reporting entity.

The financial report has been prepared on a modified accruals basis and is based on historic costs and does not take into account changing money values or, except where specifically stated, current valuations of non-current assets.

The following significant accounting policies, which are consistent with the previous period unless otherwise stated, have been adopted in the preparation of this financial report.

a. Income Tax

The members are of the understanding that Kimberley Community Legal Services Incorporated is exempt from Income Tax.

b. Property, Plant and Equipment (PPE)

Cost or Valuation

Property, Plant & Equipment are carried at cost.

Depreciation

Depreciation is provided on the straight line basis. The depreciable amount of all fixed assets are depreciated over the useful lives of the assets to the association commencing from the time the asset is held ready for use.

c. Revenue Recognition

Revenue is recognised to the extent that it is probable that the economic benefits will flow to the entity and the revenue can be reliably measured.

d. Grant Revenue Recognition

Government grants (including non-monetary grants at fair value) are not recognised until there is reasonable assurance that all conditions will be complied with and that the grants will be received.

Grants are recognised in the income statement over the periods necessary to match them with the related costs which they are intended to compensate, on a systematic basis.

The balance of grant income received which has not been recognised in the Income statement is recognised as a liability in the balance sheet as unexpended grants.

e. Cash and Cash Equivalents

Cash and cash equivalents includes cash on hand, deposits held at call with banks, and other short- term highly liquid investments with original maturities of three months or less.

f. Goods and Services Tax (GST)

Revenues, expenses and assets are recognised net of the amount of GST, except where the amount of GST incurred is not recoverable from the Australian Tax Office. In these circumstances the GST is recognised as part of the cost of the acquisition of the asset or as part of an item of expense.

Receivables and payables shown in the balance sheet are recognised inclusive of GST.

g. Employee Entitlements

Provision is made for entitlements payable to employees on the basis of statutory and contractual requirements.

h. Going Concern

The future operations of Kimberley Community Legal Services Incorporated are dependent upon adequate future funding from relevant funding bodies and the association being able to pay its debts as and when they fall due.

NOTES TO THE FINANCIAL STATEMENTS FOR THE YEAR ENDED 30 JUNE 2019

	2019 \$	2018 \$
NOTE 2: CASH		
Cash on hand	-	124
Cheque Account	-	74,137
Saving Account	135,858	147,644
Term Deposit	370,000	100,000
	505,858	321,905
NOTE 3: RECEIVABLES		
Accounts Receivable	-	64,941
Rent Receivables	2,292	3,812
	2,292	68,753
NOTE 4: PROPERTY, PLANT & EQUIPMENT		
Plant & Equipment at cost	221,933	211,699
Less: Accumulated Depreciation	(209,235)	(202,932)
	12,698	8,767
Motor Vehicles at cost	193,305	193,305
Less: Accumulated Depreciation	(171,002)	(155,007)
	22,303	38,298
Leasehold Improvements at cost	58,232	58,232
Less: Accumulated Depreciation	(58,232)	(58,232)
	-	-
Furniture & Fittings at cost	33,244	31,805
Less: Accumulated Depreciation	(32,093)	(31,805)
	1,151	-
Total Property, Plant & Equipment	36,152	47,065

NOTES TO THE FINANCIAL STATEMENTS FOR THE YEAR ENDED 30 JUNE 2019

	2019 \$	2018 \$
NOTE 5: INVESTMENTS		
Artwork	6,798	6,618
	6,798	6,618
NOTE 6: PAYABLES		
Accounts Payable	33,489	9,632
Tax Payable	41,550	33,370
Salary Sacrifice Liability	1,960	1,532
	76,999	44,534
NOTE 7: PROVISIONS		
Annual Leave	70,935	70,292
Long Service Leave	30,550	23,529
	101,485	93,821
NOTE 8: UNEXPENDED GRANTS		
Elder Abuse	104,642	-
Commonwealth Community Legal Services Program	35,811	-
Indigenous Women's Program (Dept. of PM&C)	48,050	45,434
Tenancy Advice & Education Services	-	58,538
	188,503	103,972

The unexpended grants detailed above arise on the basis of allocating expenses to the listed funding bodies at managements' discretion. The excess of income received from a particular funding body plus the carried forward balance (from 2018), less the related expenses gives the figure for each in Note 8.

Due to the above the only items which will make up the final surplus / (deficit) shown in the Income Statement for the association are expenses left un-classified by management.

NOTES TO THE FINANCIAL STATEMENTS FOR THE YEAR ENDED 30 JUNE 2019

	2019 \$	2018 \$
NOTE 9: RETAINED SURPLUS		
Retained Surplus	261,757	249,826
Surplus / (Deficit) for the year	(76,195)	11,931
	185,562	261,757

NOTE 10: EVENTS AFTER THE BALANCE SHEET DATE

Since 30 June 2019, there are no matters or circumstances that have arisen which requires adjustments to or disclosure in the financial statements.

STATEMENT BY MEMBERS OF THE COMMITTEE

The committee has determined that the association is not a reporting entity and that this special purpose financial report should be prepared in accordance with the accounting policies outlined in Note 1 to the financial statements.

In the opinion of the committee the financial report as set out on pages 3 to 8:

- 1. Presents a true and fair view of the financial position of Kimberley Community Legal Services Incorporated as at 30 June 2019 and its performance for the year ended on that date.
- 2. At the date of this statement, there are reasonable grounds to believe that Kimberley Community Legal Services Incorporated will be able to pay its debts as and when they fall due.

This statement is made in accordance with a resolution of the committee and is signed for and on behalf of the committee by:

Committee Member
Karyn Apperley, Acting Chair

Committee Member
Allan Wedderburn, Treasurer

Dated this 22 day of November 2019

INDEPENDENT AUDITOR'S REPORT TO THE MEMBERS OF
KIMBERLEY COMMUNITY LEGAL SERVICES INCORPORATED

Report on the Audit of the Financial Report

OPINION

We have audited the financial report of Kimberley Community Legal Services Incorporated (the association), which comprises the statement of financial position as at 30 June 2019, the statement of profit or loss and other comprehensive income and statement of cash flows for the year then ended, notes comprising a summary of significant accounting policies and other explanatory information, and the statement by members of the committee.

In our opinion the financial statements present a true and fair view of the financial position of Kimberley Community Legal Services Incorporated at 30 June 2019 and the results of its operations and its cash flows for the year then ended in accordance with the accounting policies described in Note 1 to the financial statements and is appropriate to meet the needs of the members.

BASIS FOR OPINION

We conducted our audit in accordance with Australian Auditing Standards. Our responsibilities under those standards are further described in the Auditor's Responsibilities for the Audit of the Financial Report section of our report. We are independent of the association in accordance with ethical requirements of the Accounting Professional and Ethical Standards Board's APES 110: Code of Ethics for Professional Accountants (the Code) that are relevant to our audit of the financial report in Australia. We have also fulfilled our other ethical responsibilities in accordance with the Code.

We believe that the audit evidence we have obtained is sufficient and appropriate to provide a basis for our opinion.

EMPHASIS OF MATTER

Basis of Accounting

We draw attention to Note 1 to the financial report, which describes the basis of accounting. The financial report has been prepared to assist Kimberley Community Legal Services Incorporated to meet the requirements of the association's constitution and its members. As a result, the financial report may not be suitable for another purpose. Our opinion is not modified in respect of this matter.

Expense Classification

Kimberley Community Legal Services Incorporated receives funding from a number of funding bodies. As such, shared expenses on a number of occasions have been split and classified to a number of funding bodies sub accounts. The split and classification of these expenses for the financial year has been based on allocations approved by the senior management.

RESPONSIBILITIES OF THE COMMITTEE FOR THE FINANCIAL REPORT

The committee is responsible for the preparation and fair presentation of the financial report in accordance with the financial reporting requirements and for such internal control as the committee determines is necessary to enable the preparation and fair presentation of a financial report that is free from material misstatement, whether due to fraud or error.

In preparing the financial report, the committee is responsible for assessing the association's ability to continue as a going concern, disclosing, as applicable, matters related to going concern and using the going concern basis of accounting unless the committee either intends to liquidate the association or to cease operations, or have no realistic alternative but to do so.

The committee is responsible for overseeing the association's financial reporting process.

AUDITOR'S RESPONSIBILITIES FOR THE AUDIT OF THE FINANCIAL REPORT

Our objectives are to obtain reasonable assurance about whether the financial report as a whole is free from material misstatement, whether due to fraud or error, and to issue an auditor's report that includes our opinion. Reasonable assurance is a high level of assurance, but is not a guarantee that an audit conducted in accordance with the Australian Auditing Standards will always detect a material misstatement when it exists. Misstatements can arise from fraud or error and are considered material if, individually or in the aggregate, they could reasonably be expected to influence the economic decisions of users taken on the basis of this financial report.

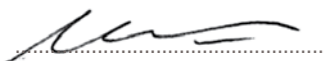
As part of an audit in accordance with the Australian Auditing Standards, we exercise professional judgement and maintain professional scepticism throughout the audit. We also:

- Identify and assess the risks of material misstatement of the financial report, whether due to fraud or error, design and perform audit procedures responsive to those risks, and obtain audit evidence that is sufficient and appropriate to provide a basis for our opinion. The risk of not detecting a material misstatement resulting from fraud is higher than for one resulting from error, as fraud may involve collusion, forgery, intentional omissions, misrepresentations, or the override of internal control.
- Obtain an understanding of internal control relevant to the audit in order to design audit procedures that are appropriate in the circumstances, but not for the purpose of expressing an opinion on the effectiveness of the association's internal control.
- Evaluate the appropriateness of accounting policies used and the reasonableness of accounting estimates and related disclosures made by the committee.
- Conclude on the appropriateness of the committee's use of the going concern basis of accounting and, based on the audit evidence obtained, whether a material uncertainty exists related to events or conditions that may cast significant doubt on the association's ability to continue as a going concern. If we conclude that a material uncertainty exists, we are required to draw attention in our auditor's report to the related disclosures in the financial report or, if such disclosures are inadequate, to modify our opinion. Our conclusions are based on the audit evidence obtained up to the date of our auditor's report. However, future events or conditions may cause the association to cease to continue as a going concern.
- Evaluate the overall presentation, structure and content of the financial report, including the disclosures, and whether the financial report represents the underlying transactions and events in a manner that achieves fair presentation.

We communicate with the committee regarding, among other matters, the planned scope and timing of the audit and significant audit findings, including any significant deficiencies in internal control that we identify during our audit.



LBW Chartered Accountants



Sripathy Sarma

Principal

Dated this 22nd day of November 2019





KCLS.ORG.AU  **@KimberleyCLS**

